

GL501MG Quick Start V1.00

Page 1: Basic Operation



1

Check Parts List
Make sure there is no missing part.



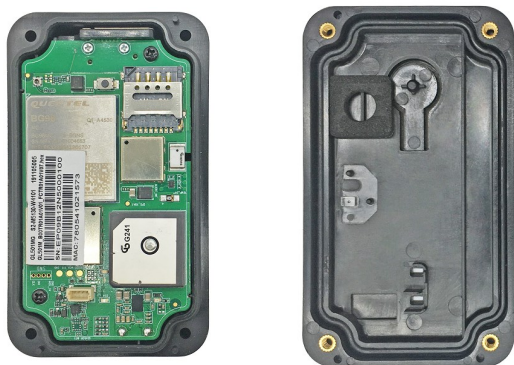
2

Check The Appearance



3

Unscrew the device and then long press the button for more than 3 seconds to turn it on.



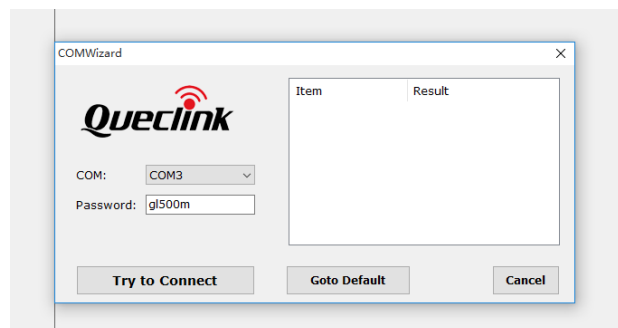
4

Connect GL501MG to your computer with 4-pin data cable (ordered separately).



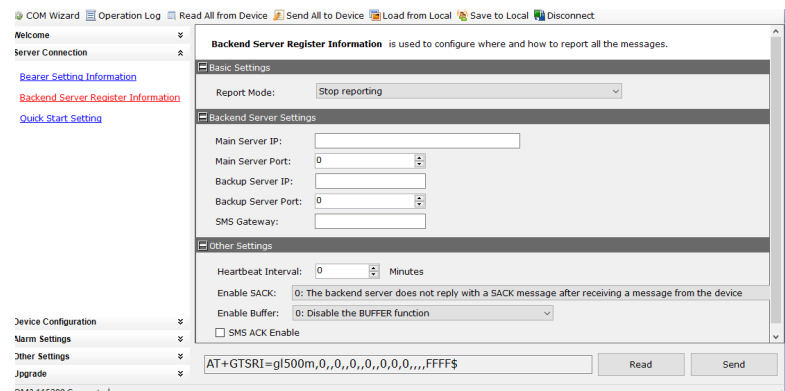
5

Find "PL2303_Prolific_DriverInstaller_vxxxx" and choose the suitable driver for your computer system. If you have already installed it, please go to Step 6.



6

Find "Queclink_GL501M_Manage_Tool_Vx.xx.exe" in developer suite and run it to configure the parameters of GL501MG. Please refer to Page 2 for details.



7

Charge the GL501MG with wireless charging pad (ordered separately).



8

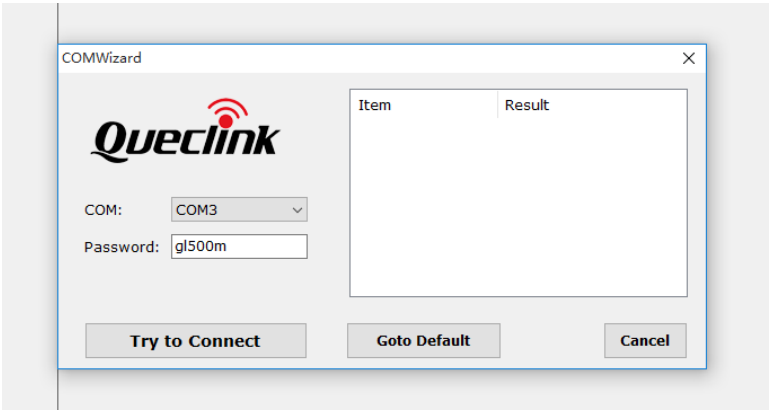
Better place the GL501M under the open sky and let the surface with LED indicators face the sky.



Page 2: PC Manage Tool Quick Start

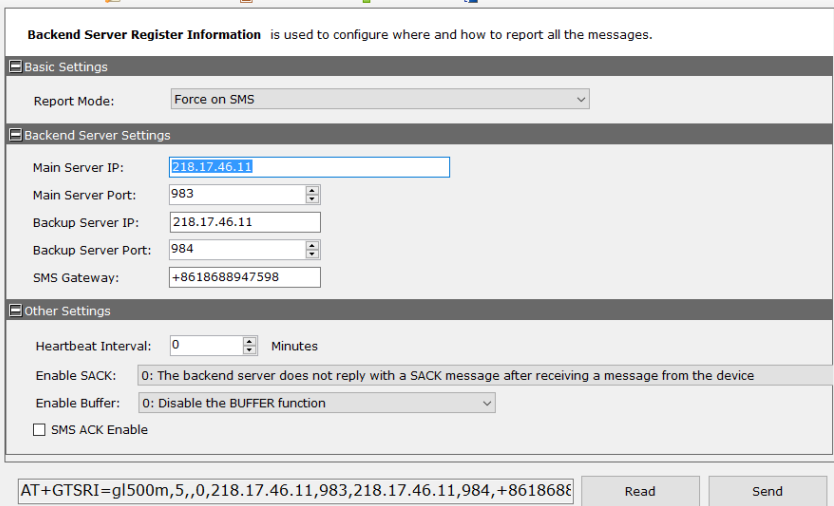
1

Run the Manage Tool. Select correct COM port and input default password “gl500m”. Then press OK.



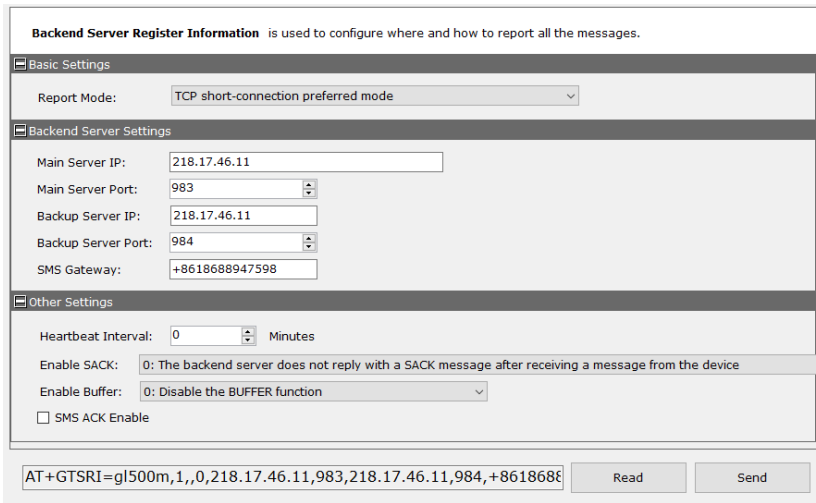
2

If you want to test the GL501MG via SMS, set “Report Mode” to “Force on SMS” and input the phone number to receive the SMS from GL501MG. After that, go to Step 6. Otherwise, please go to Step 3.



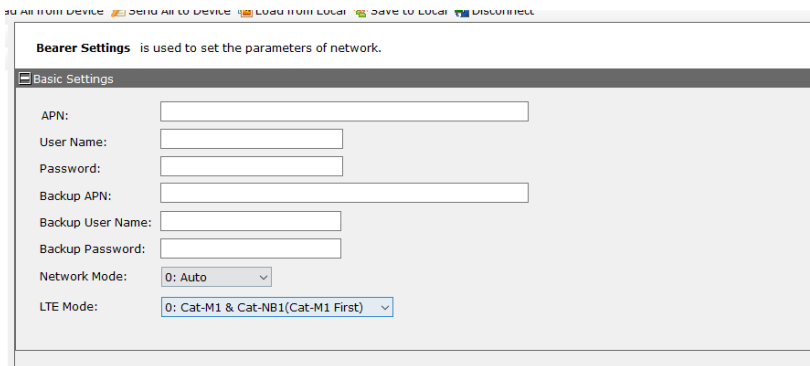
3

Set “Report Mode” to “TCP Short Connection”. Input the IP address and port number of the backend server. Please make sure the IP address can be accessed over the internet and the data sent to this address can be received.



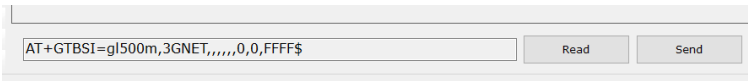
4

Please contact your SIM card provider to get the user information for network. Input it in GTBSI setting.

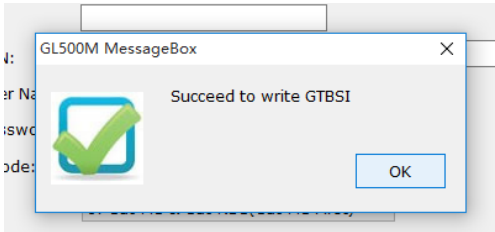


5

Press “Send” button and update the parameters of GL501MG. Then the GL501MG can report information to your backend server or SMS receiver. Note: These commands can also be sent to GL501MG via SMS.

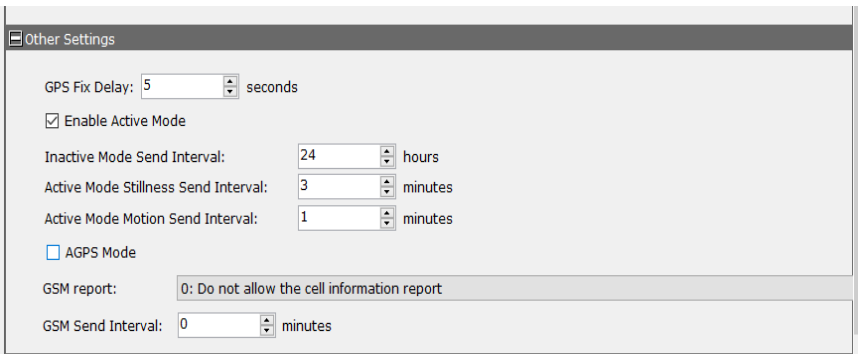


Command has been accepted when you see the window shown below.



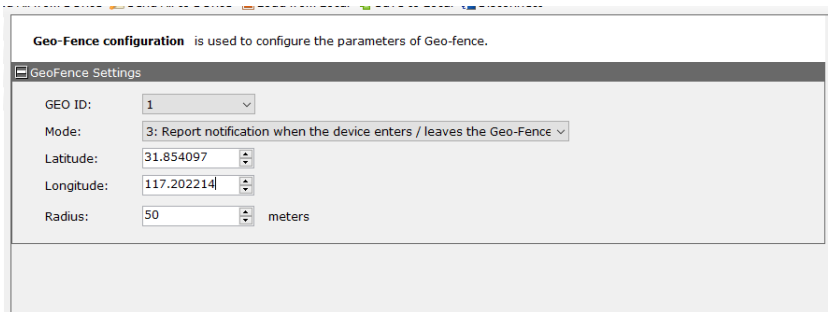
6

Set the parameters of fixed time report so that the GL501MG will report its position to backend server periodically. Press “Send” button to update the parameters.



7

The following screenshot shows how to create a Geo-fence. Press “Send” button to update the parameters.



After these steps, GL501MG will have some basic tracking functions such as fixed time report and Geo-fence. For other advanced functions of GL501MG, please refer to “GL501MG @Track Air Interface Protocol” or visit our website.

<http://www.queclink.com>

sales@queclink.com