

GL300W Manage Tool User Guide

GSM/GPRS/WCDMA/GNSS Tracker

TRACGL300W_MT001

Version:1.01

GL300W



International Telematics Solutions Innovator

www.queclink.com

Document Title	GL300W Manage Tool User Guide
Version	1.01
Date	2015-12-23
Status	Release
Document Control ID	TRACGL300WMT001

General Notes

Queclink offers this information as a service to its customers, to support application and engineering efforts that use the products designed by Queclink. The information provided is based upon requirements specifically provided to Queclink by the customers. Queclink has not undertaken any independent search for additional relevant information, including any information that may be in the customer's possession. Furthermore, system validation of this product designed by Queclink within a larger electronic system remains the responsibility of the customer or the customer's system integrator. All specifications supplied herein are subject to change.

Copyright

This document contains proprietary technical information which is the property of Queclink Limited., copying of this document and giving it to others and the using or communication of the contents thereof, are forbidden without express authority. Offenders are liable to the payment of damages. All rights reserved in the event of grant of a patent or the registration of a utility model or design. All specification supplied herein are subject to change without notice at any time.

Copyright © Queclink Wireless Solutions Co., Ltd. 2013

Contents

Contents	2
1. Revision history	3
2. GL300W Manage Tool Interface	4
2.1. System Requirements	4
2.2. COM Setting	5
2.3. Quick Setting Wizard	5
2.4. Professional Setting Windows	6
2.4.1. Title Bar	6
2.4.2. Menus	6
2.4.2.1. Start Menu	6
2.4.2.2. Tool Menu	6
2.4.2.3. Help Menu	8
2.4.3. Toolbar	9
2.4.4. Status Bar	10
2.4.5. Command Browser and Command Operation Space	10
2.4.5.1. Command Brower	10
2.4.5.2. Command Operation Space	11
2.5. Operation Result Interface	12
2.5.1. Operation Successfully Interface	12
2.5.1.1. Command read OK	12
2.5.2. Operation Failed Interface	12
3. Operation Instruction	14
3.1. Device Configuration with Quick Setting Wizard	14
3.1.1. Welcome to Quick Setting Wizard	14
3.1.2. UMTS Network Setting	14
3.1.3. Main Server Setting	15
3.1.4. Fixed Time Report Setting	16
3.1.5. Send Command to Device	17
3.2. Device Configuration in Professional Setting Mode	18
3.3. Read/Save All Configuration	19
3.4. Load/Send All Configuration	20

1. Revision history

Revision	Date	Author	Description of change
V1.00	2015-10-17	Sivan	Initial
V1.01	2015-12-23	Sivan	Add UPC/PDS/CMD/UDF/WLT

2. GL300W Manage Tool Interface

GL300W manage tool is PC software which can be used to configure GL300W through Data_Cable_M or USB Cable. It is easy for the backend server developers to configure GL300W with manage tool, which has friendly user interface. The correct command messages sent to GL300W will be displayed on the manage tool. (These messages can also be sent by SMS or UMTS).

The administrators can also use the manage tool to configure GL300W before selling. But it is strongly recommended to establish a backend server and implement the way to control GL300W by SMS or UMTS. Please refer to “GL300W @Tracker Air Interface Protocol” for detail.

Before using the manage tools please find “Queclink_WCDMA_USBDriver_V1.00” in develop suit and install the driver. After that a new COM port can be found in the PC system, and then please follow the steps as below:

1. Power on GL300W.
2. Connect GL300W to PC with USB Cable or DATA_CABLE_M.
3. Run “Queclink GL300W_Manage_Tool_Vx.xx.exe”.

2.1. System Requirements

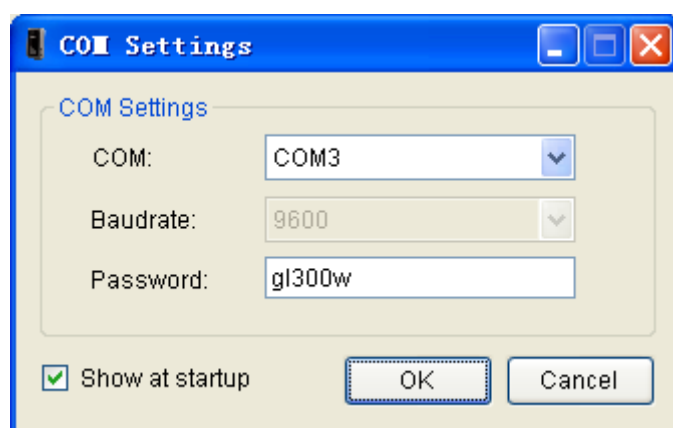
In order for this manage tool to run on your computer, you must use it in below operating system:

- ◆ Windows 98SE;
- ◆ Windows ME Windows 2000 SP4;
- ◆ Windows XP SP2 and above (32 & 64 bit);
- ◆ Windows Server 2003 (32 & 64 bit);
- ◆ Windows Server 2008 (32 & 64 bit);
- ◆ Windows Vista (32 & 64 bit);
- ◆ Windows 7 (32 & 64 bit);
- ◆ Windows 8 (32 & 64 bit);

Supported System Environments:

- ◆ Microsoft .NET Framework 2.0 or higher

2.2. COM Setting



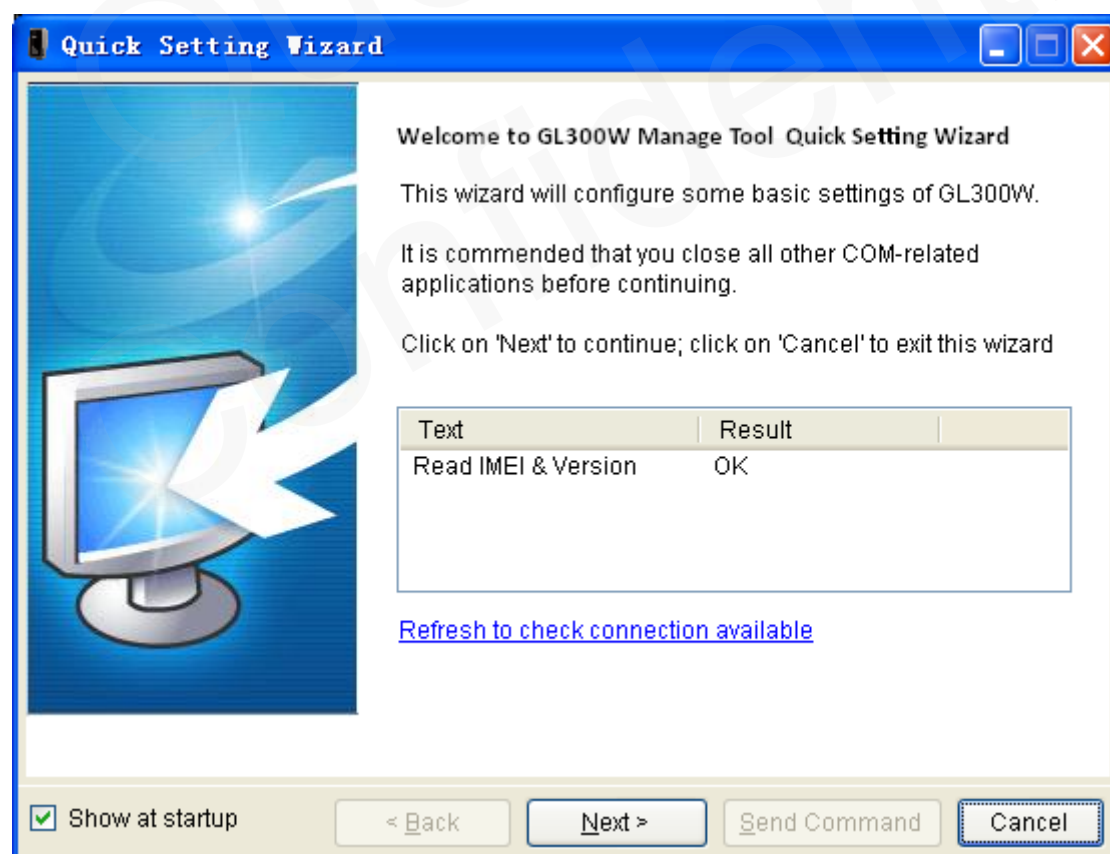
Select the COM port, input the password "gl300w", and the main window will display.

2.3. Quick Setting Wizard

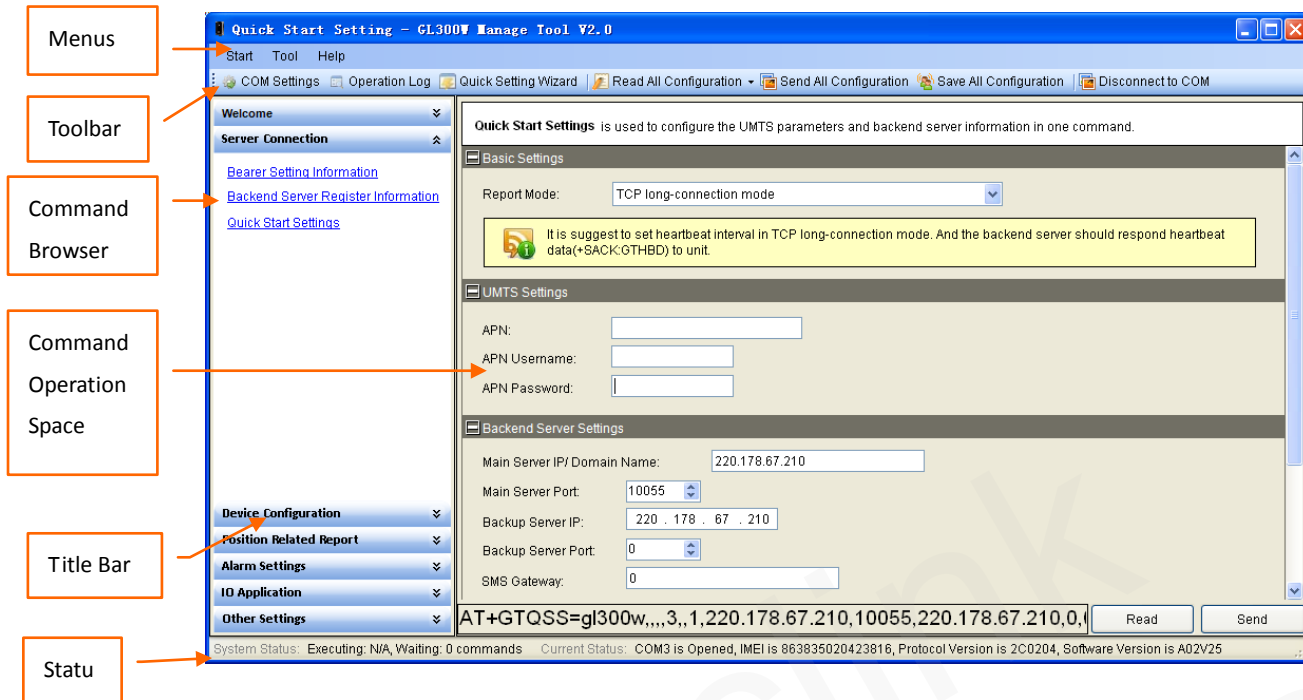
The quick setting wizard gives a basic setting for device. If you want use more functions of GL300W, please change to enter professional setting mode.

Before you enter quick setting wizard, you must make sure the COM connection is OK.

Please refer chapter 3.1 for the detail of setting with quick setting wizard.



2.4. Professional Setting Windows



2.4.1. Title Bar

Title Bar indicates current operational command title.

2.4.2. Menus

It include "Start", "Tool", "Help" menu in menus.



2.4.2.1. Start Menu

Start menu include "COM Settings".

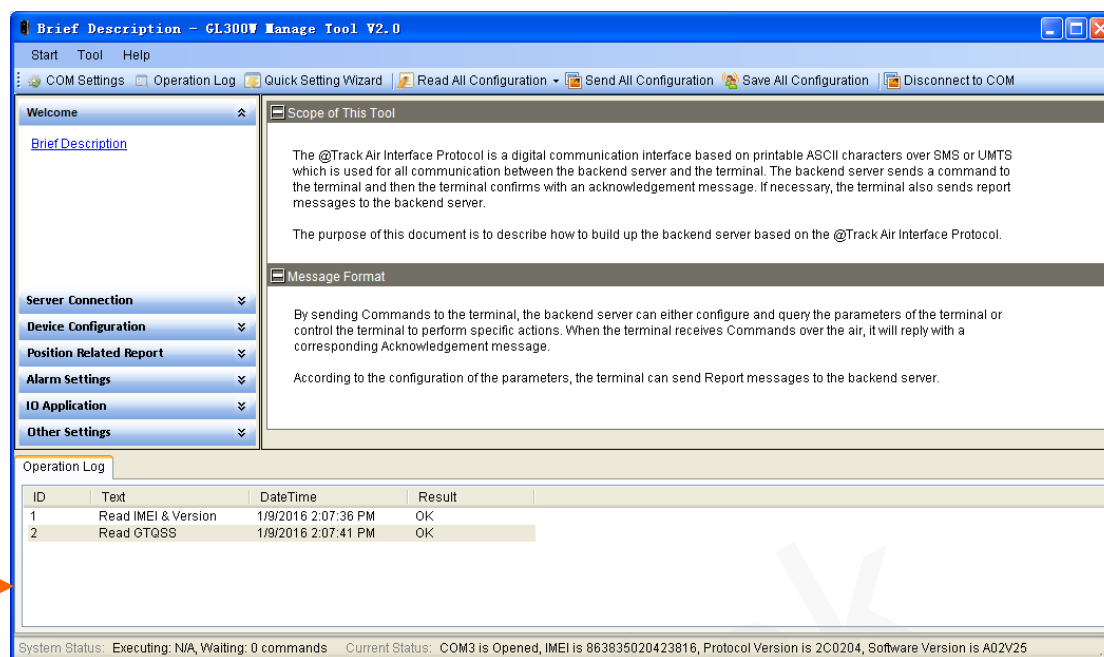
[COM Setting]: It is used to set the COM information and password Setting details, please refer to chapter 2.2

2.4.2.2. Tool Menu

Tool menu include "Quick Setting Wizard", "Operation Log", "Options" setting.

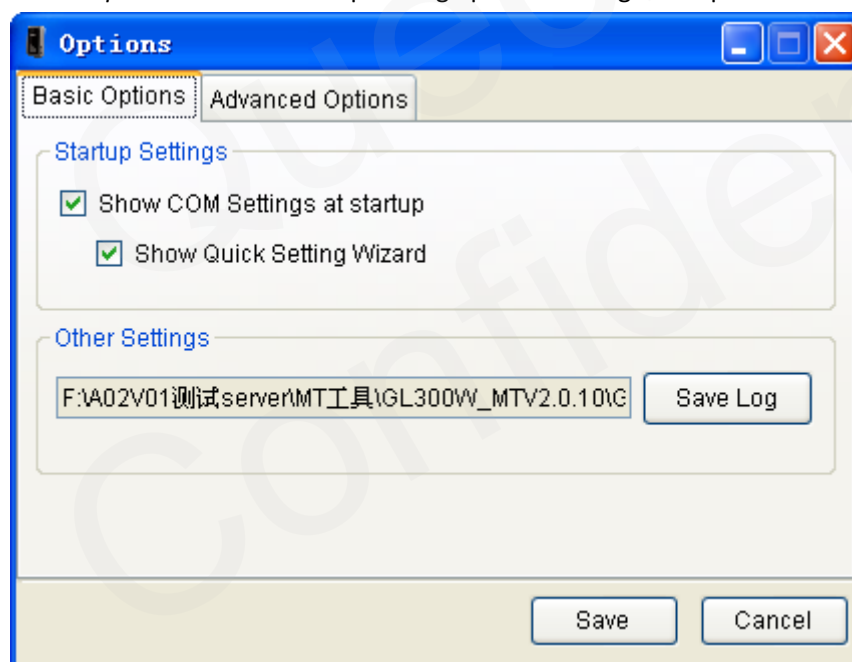
[Quick Setting Wizard]: It is used to open quick setting wizard directly. Please refer to chapter 3.1 for details.

[Operation Log]: It is used to display/hidden the operation log.



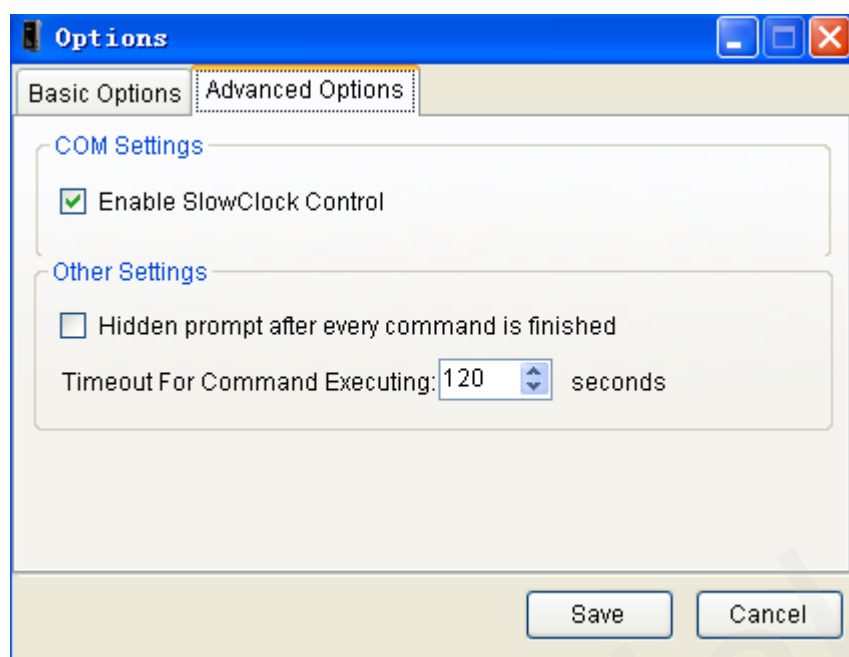
[Options]: It is used to set the basic setting of manage tool.

“Basic Options” include startup setting options and log save option.



“Advanced Options” include COM settings and other settings.

COM Settings is used to set enable/disable slowclock control. It is recommended using default setting for these settings.



2.4.2.3. Help Menu

Help menu include "About" and "Diagnosis".

[About]: Select "About". Then the following pop up window will display.

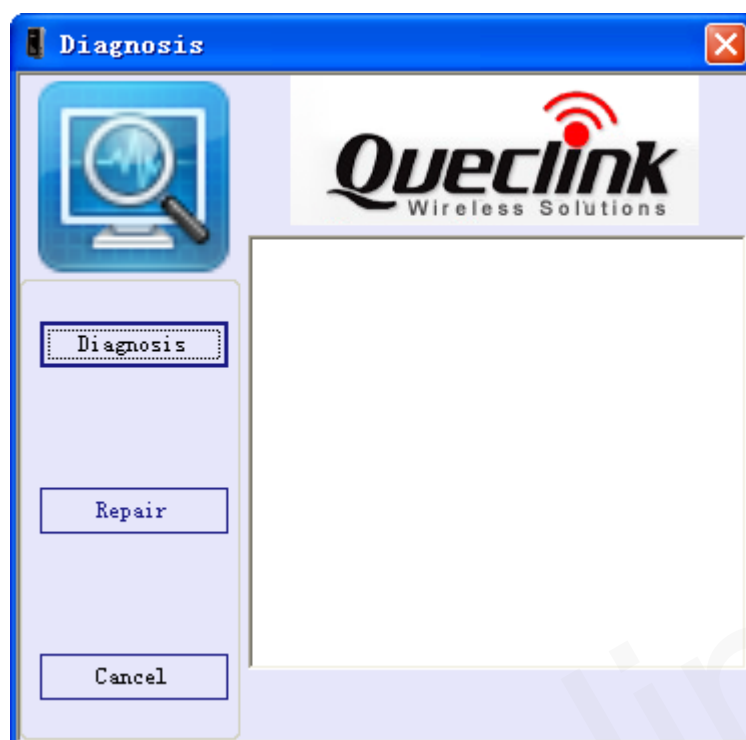


"Tool Version" indicates the version of this manage tool.

"Support Version" indicates the firmware which this manage tool used for.

"Device Version" indicates the firmware which connects to the PC. It is recommended using the same version of support version. If it is different between support version and device version, the new character of device can not be used in this tool.

[Diagnosis]: Select "Diagnosis". Then the following pop up window will display.



This function is only for technology diagnosis when the device report data abnormally, please ignore it when it works normally.

2.4.3. Toolbar

It include "COM Setting", "Operation Log", "Quick Setting Wizard", "Real All Configuration", "Execute All Configuration", "Save All Configuration", "Connect/Disconnect to COM".



[COM Setting]: It is used to set the COM information and password. Setting details please refer to chapter 2.2.

[Operation Log]: It is used to display/hidden operation log.

[Quick Setting Wizard]: It is used to open quick setting wizard directly. Please refer to chapter 3.1 for details.

[Read All Configuration]: It is used to display/hidden operation log.



"Read From Device": It is used to read all configuration from device which connects to PC.

"Load Configuration From File": It is used to load configuration file to the manage tool.

[Send All Configuration]: It is used to execute all configurations in Command Operation Space except GTRTO.

[Save All Configuration]: It is used to save all configurations in Command Operation Space to file.

[Connect/Disconnect to COM]: It is used to Connect/Disconnect to COM manually.

2.4.4. Status Bar

System Status: Executing: N/A, Waiting: 0 commands Current Status: COM3 is Opened, IMEI is 863835020423816, Protocol Version is 2C0204, Software Version is A02V25

There is system status and current status in status bar.

[System Status]: It indicates the count of commands which are waiting and executing to set.

[Current Status]: It indicates current COM status, IMEI, protocol version and software version which read from device.

2.4.5. Command Browser and Command Operation Space

This area is mainly read and set parameters of device

2.4.5.1. Command Brower

Command Brower separates all @Track protocol command to several parts. Click Function in command Brower, reference parameters of this command will be shown in command operation space.

Command Brower	Function Description	Relative Command
Server Connection	Bearer Setting Information	GTBSI
	Backend Server Register Information	GTSRI
	Quick Start Settings	GTQSS
Device Configuration	Global Configuration	GTCFG
	Auto-Unlock PIN	GTPIN
	Protocol Watchdog	GTDOG
	Time Adjustment	GTTMA
	Non Movement Detection	GTNMD
	Function Key Setting	GTFKS
	Outside Working Hours	GTOWH
Position Related Report	Fixed Position Report	GTFRI
Alarm Setting	Geo-Fence Configuration	GTGEO
	Speed Alarm	GTSPD
	Temperature Alarm	GTTEM
IO Application	Digital Input Settings	GTDIS
Other Settings	Real Time Operation	GTRTO
	Data transfer between UART and	GTDTA

	backend server	
	Google Link SMS Configuration	GTGLM
	Update configuration over the air	GTUPC
	Preserve special device logical state	GTPDS
	Store Command String	GTCMD
	User Defined Function	GTUDF
	White Number List Configuration	GTWLT

2.4.5.2. Command Operation Space

Command
Description

Parameters
Area

Command
Display

Quick Start Settings is used to configure the UMTS parameters and backend server information in one command.

Basic Settings

Report Mode:

It is suggest to set heartbeat interval in TCP long-connection mode. And the backend server should respond heartbeat data(+SACK:GTHBD) to unit.

UMTS Settings

APN:

APN Username:

APN Password:

Backend Server Settings

Main Server IP/Domain Name:

Main Server Port:

Backup Server IP:

Backup Server Port:

SMS Gateway:

Other Settings

Heartbeat Interval: minutes

SACK Enable:

Buffer Enable:

Command Display

AT+GTQSS=gl300w,,,3,,1,220.178.67.210,10057,220.178.67.210,0,0,15,0,,,FFFF\$

[Command Description]: There is a short description for reference command.

[Parameters Area]: Set/Read parameters of this command in this area.

[Command Display]: Command with parameters in parameters area display in this area.

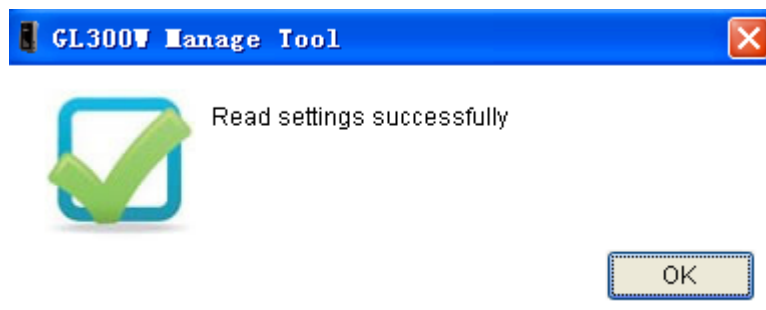
[Read]: Click this button to read this command from device.

[Send]: Click this button to send this command to device.

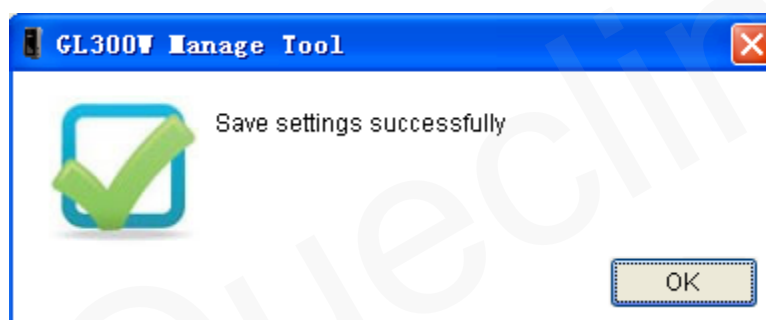
2.5. Operation Result Interface

2.5.1. Operation Successfully Interface

2.5.1.1. Command read OK.

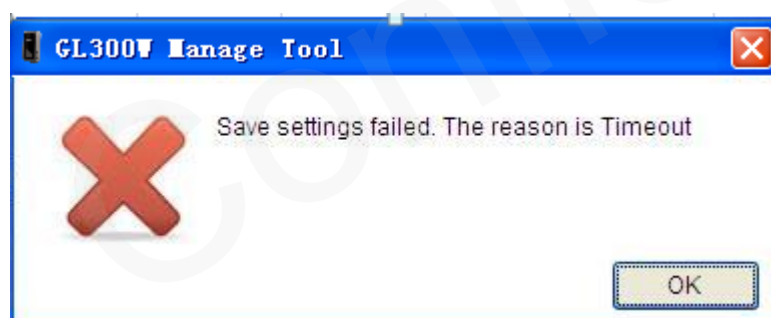


Command send OK.

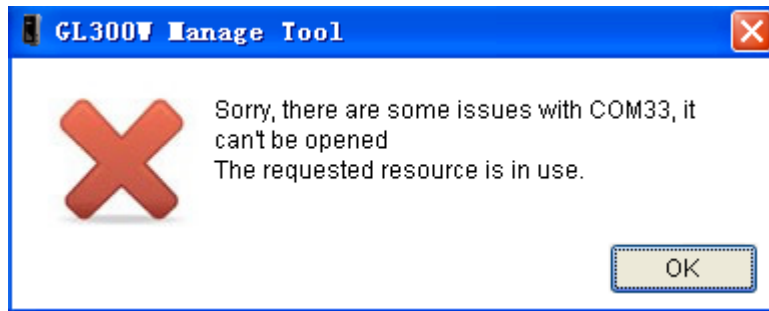


2.5.2. Operation Failed Interface

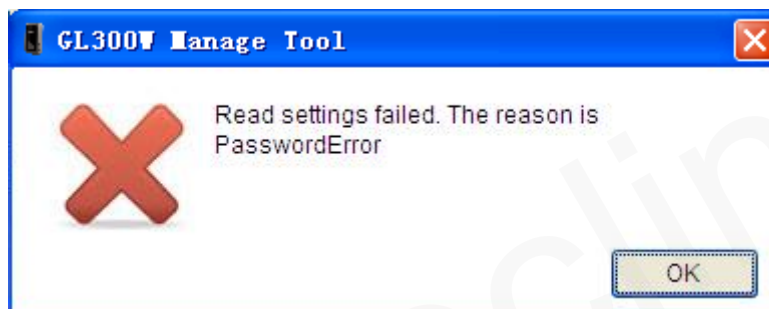
There should be COM port connection problem if the fail reason is timeout.



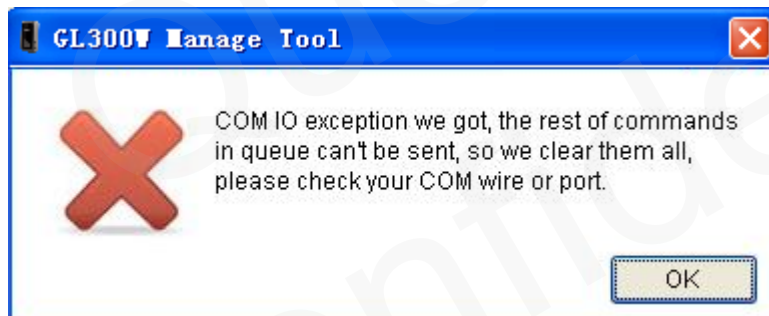
There should be COM port is occupied. Please close all other COM-related applications.



Please change to correct device password if Password Error.



There are some issues with this com, please check your com wire or port.



3. Operation Instruction

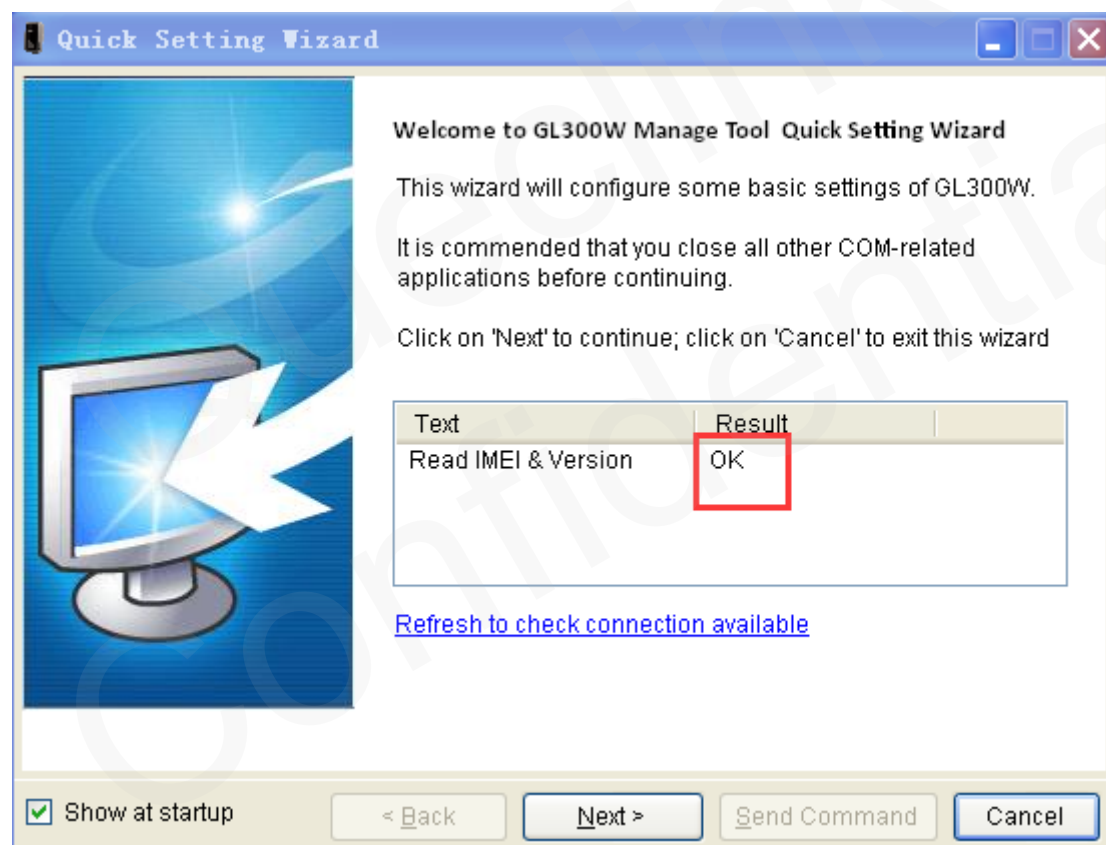
3.1. Device Configuration with Quick Setting Wizard

The manage tool is developed based on the @Track Air Interface Protocol. Please refer to “GL300W @Track Air Interface Protocol” for detail.

The quick setting wizard gives a basic setting for device. If you want use more functions of GL300W, please change to professional setting mode.

3.1.1. Welcome to Quick Setting Wizard

Click “Quick Setting Wizard” in toolbar, open quick setting wizard. If the “Result” in this window is OK, click “Next”. If the “Result” is not OK, please check the COM port connection till the result is OK.



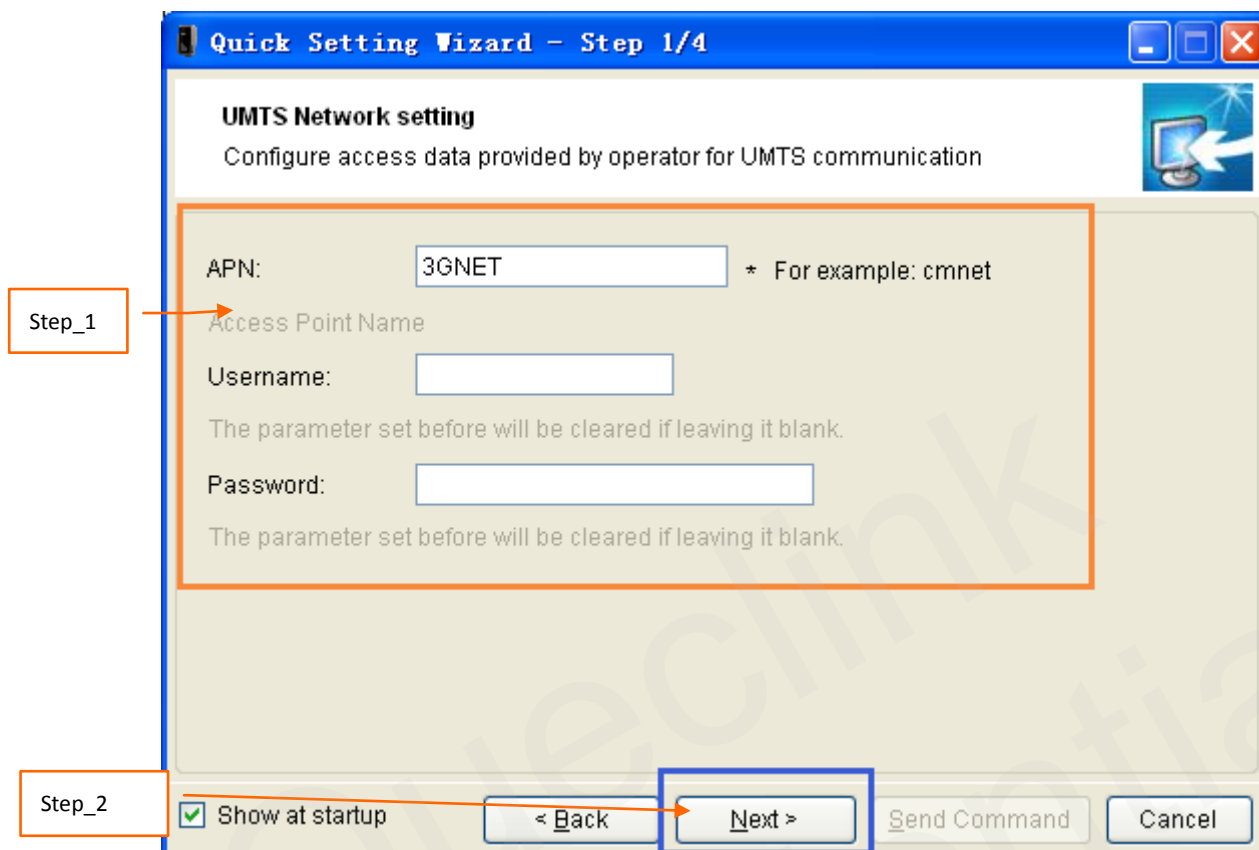
Welcome to Quick Setting Wizard

3.1.2. UMTS Network Setting

Step_1: Set APN, APN user name and password in this window. The meaning of these parameters,

please refer to the “GL300W @Track Air Interface Protocol” for detail.

Step_2: Then click “Next”.

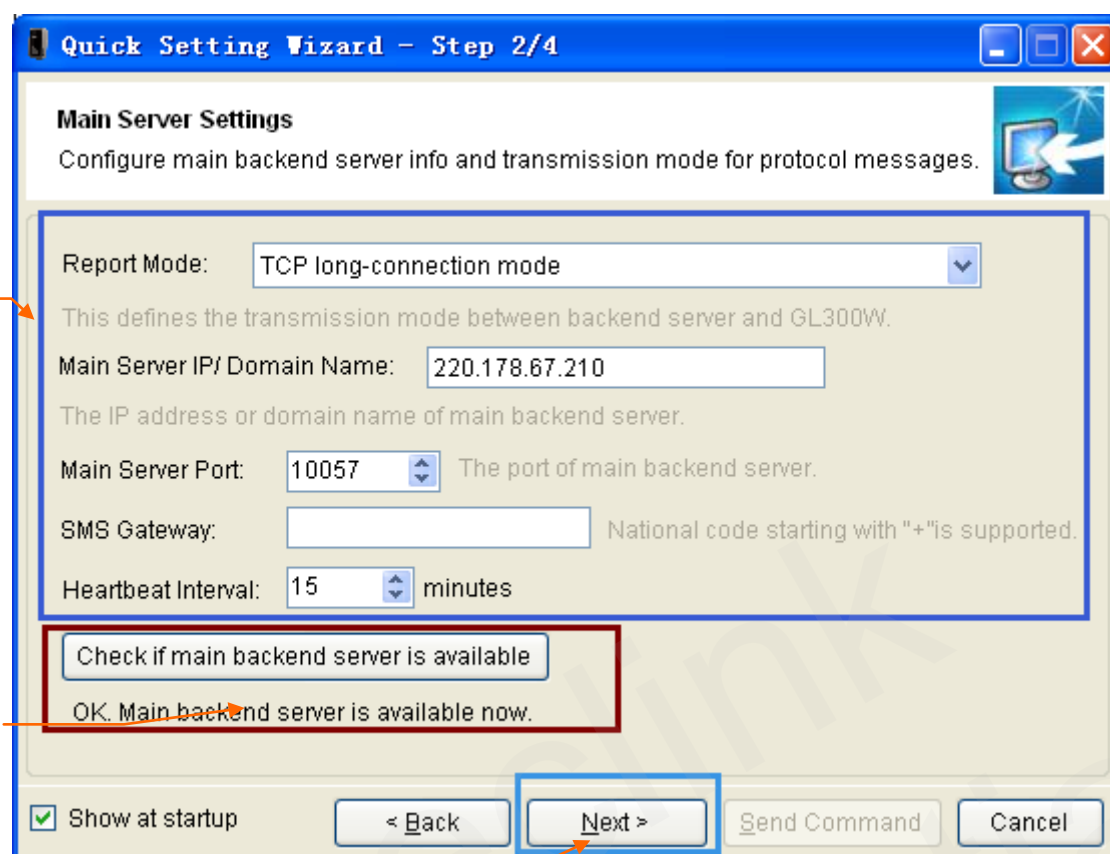


3.1.3. Main Server Setting

Step_1: Set report mode, main server, main server port, and SMS gateway in this window. The meaning of these parameters, please refer to the “GL300W @Track Air Interface Protocol” for detail.

Step_2: Click “Check if main backend server is available” to check if main server IP and port is valid in network. If the result is ERROR, please check the server connection. You can not get report from server if the server connection has problem.

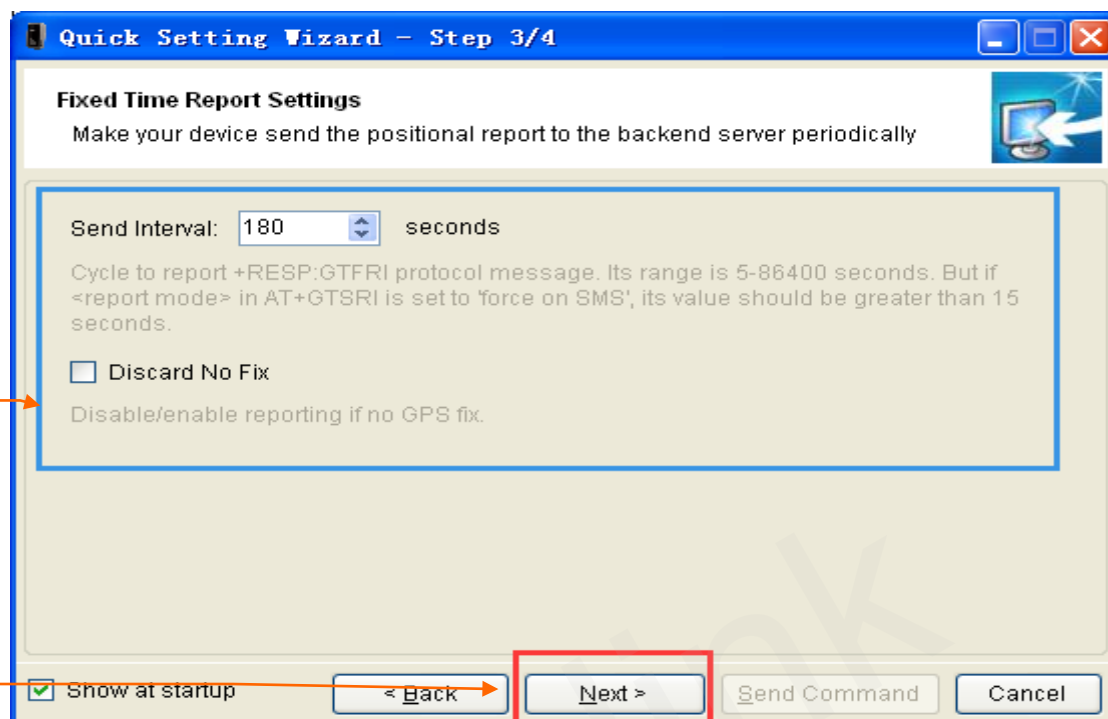
Step_3: Click “Next”.



3.1.4. Fixed Time Report Setting

Step_1: Set check interval, send interval, discard no fix in this window. The meaning of these parameters, please refer to the "GL300W @Trak Air Interface Protocol" for detail.

Step_2: Click "Next".

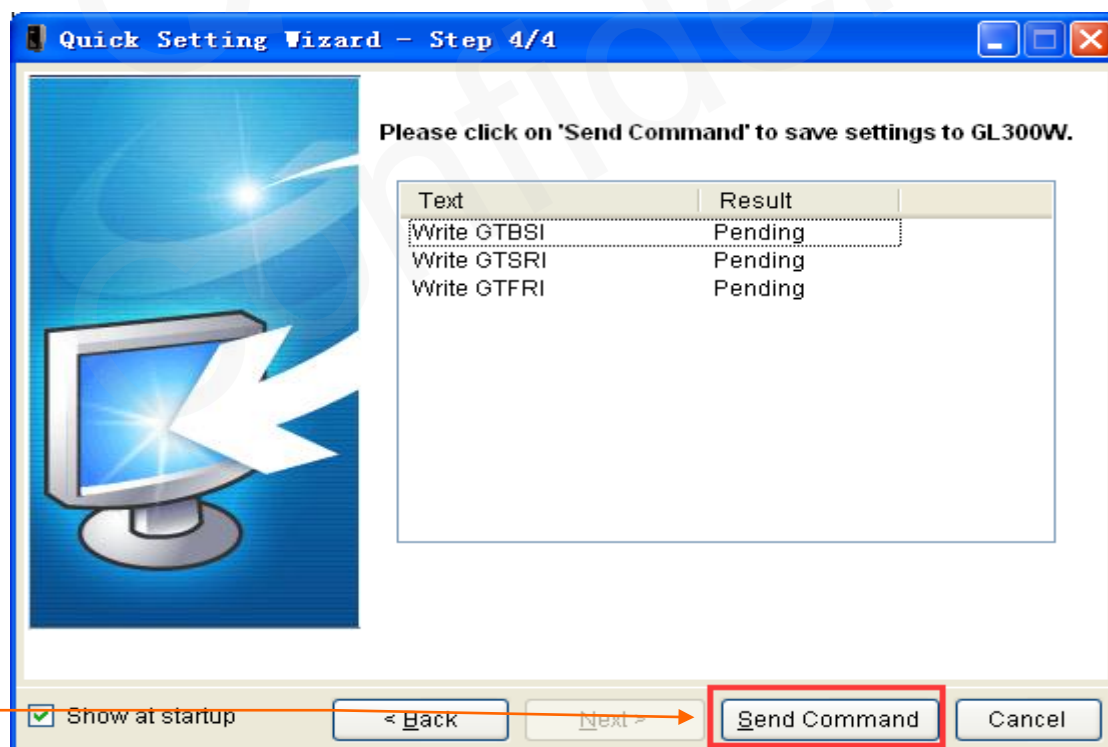


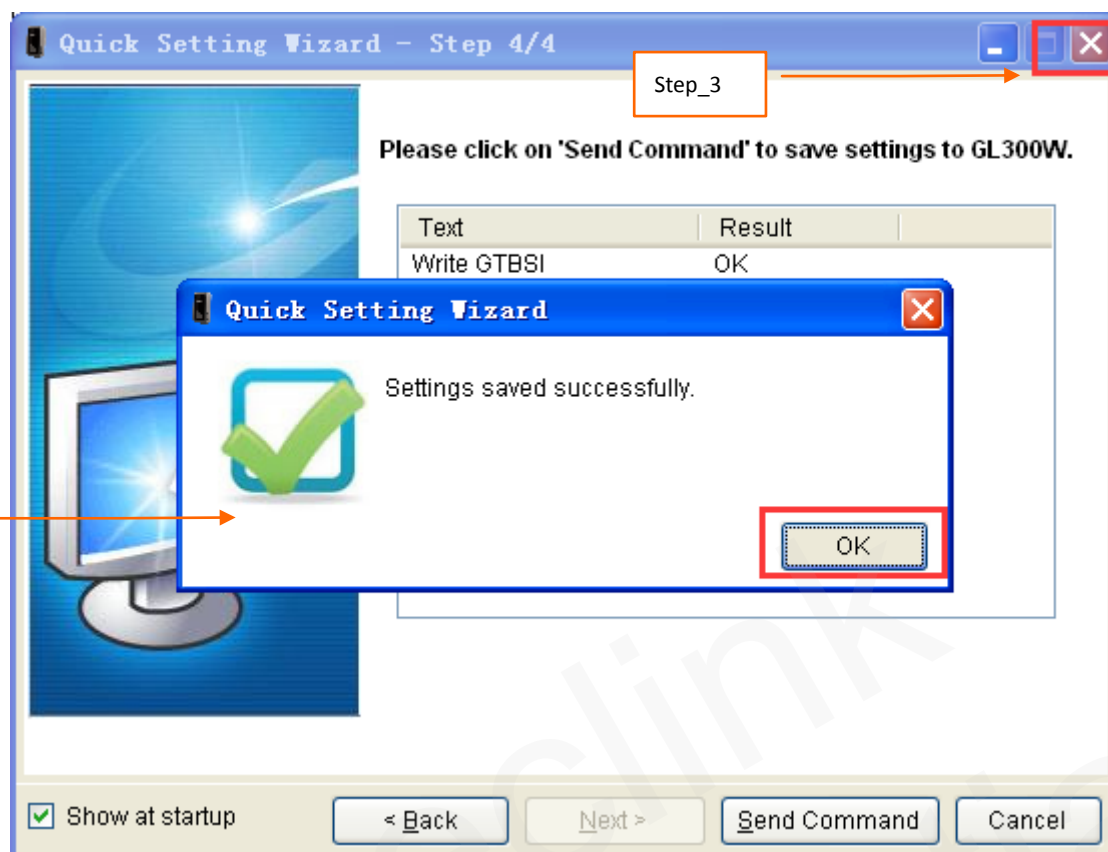
3.1.5. Send Command to Device

Step_1: Click "Send Command". Command *GTBSI*, *GTSRI*, and *GTFRI* will send to device.

Step_2: If the settings download successfully, the result return OK. Click "OK".

Step_3: Exit the quick setting wizard.

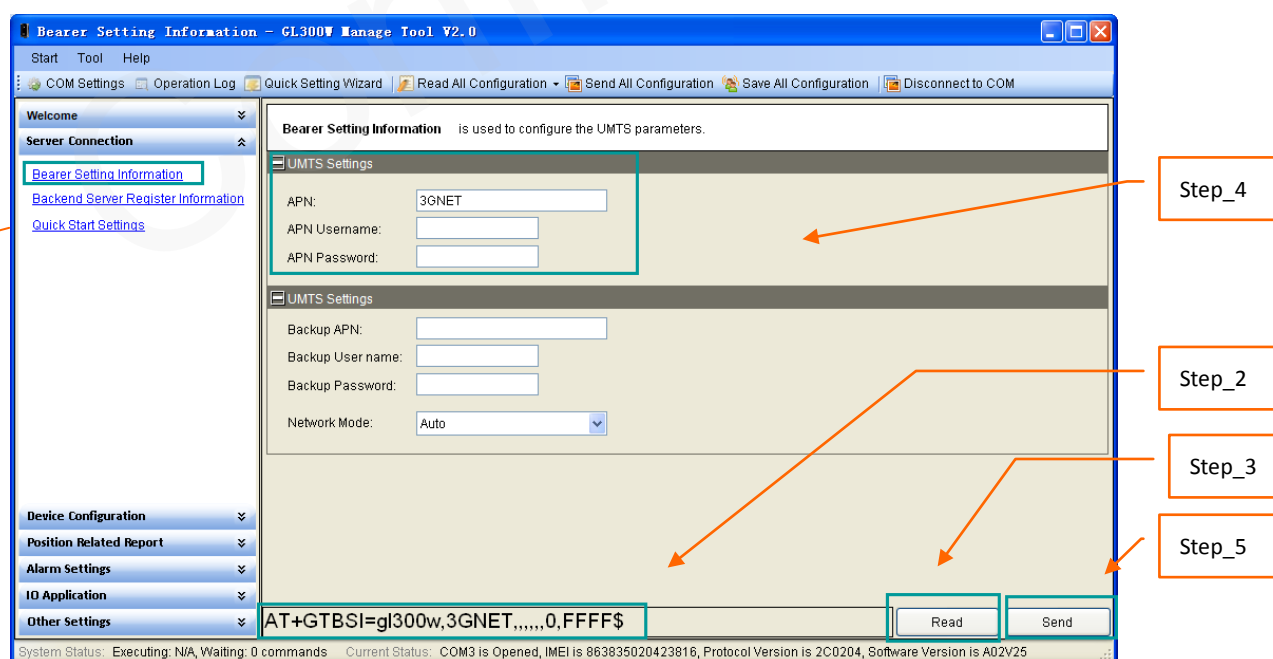




3.2. Device Configuration in Professional Setting Mode

The manage tool is developed based on the @Track Air Interface Protocol. Please refer to "GL300W @Track Air Interface Protocol" for detail.

Following is a general procedure to configure GL300W with manage tool.



Step_1: Select Command

Select command in Command Brower Windows basic on the function describes, after that the parameters of the function show in Command Operation Space.

Step_2: Command Create Automatically

The command message which shall be sent to GL300W will be generated based on input and displayed here. Please note this command message can also be sent to GL300W through SMS or UMTS.

Step_3: Read Command from Device

It is recommended to read the parameters from GL300W and edit based on them.

Step_4: Set Parameter

Set parameters in Command Operation Space. Please refer to "GL300W @Track Air Interface Protocol" for the meaning of each parameter.

Step_5: Send Command to Device

Click the "Send" button; download the parameters of this command to GL300W.

Note:

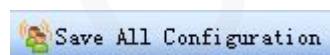
1. The parameters of GTSRI and GTBSI will be changed when change the parameters of GTQSS.

3.3. Read/Save All Configuration

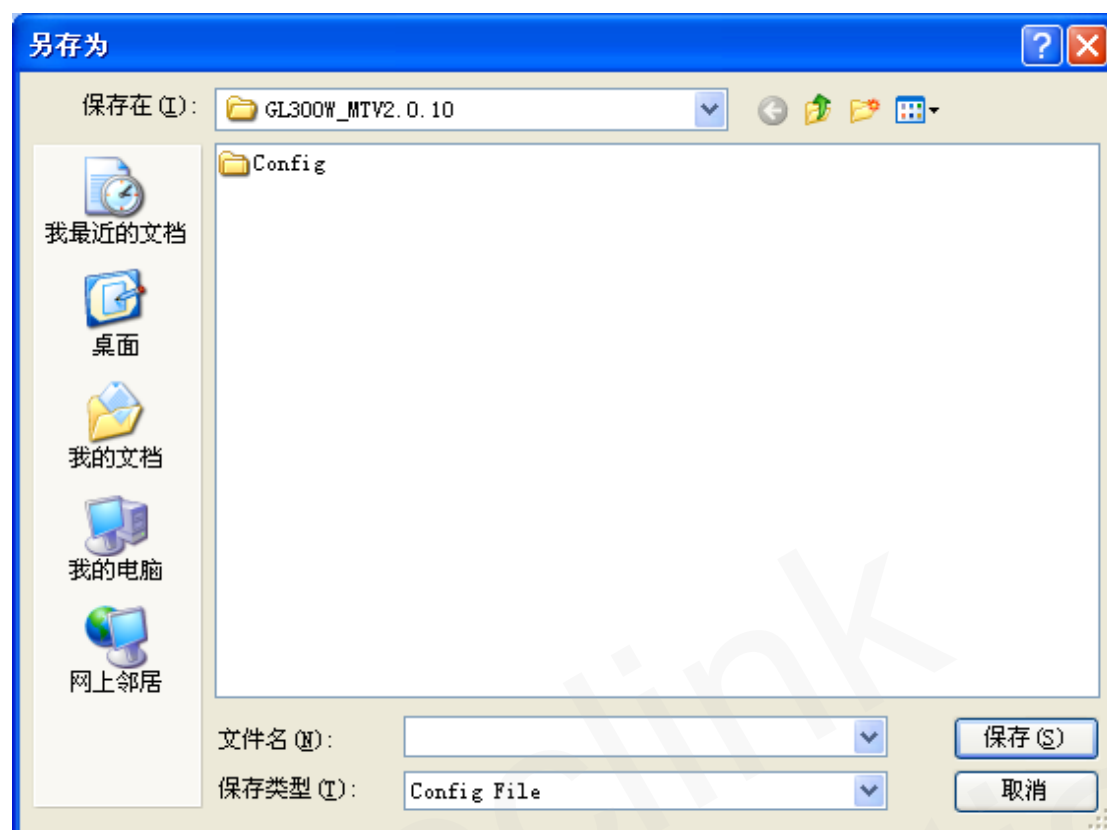
Step_1: It is recommended to read all configurations from device before saving the configuration. Select "Read All Configuration" → "Read From Device".



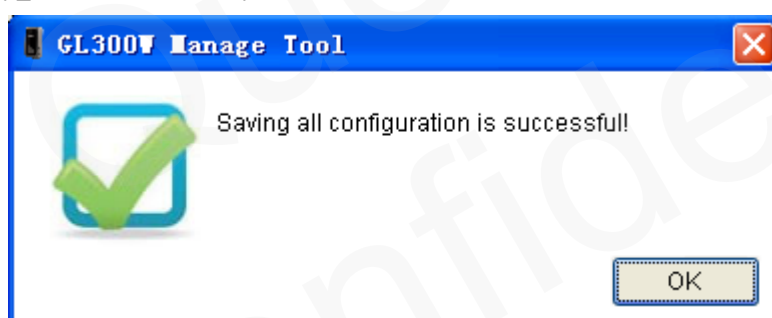
Step_2: After read successfully, click "Save All Configuration" in toolbar.



Step_3: Select a folder, and key in the name of configuration file, then click "Save" button.

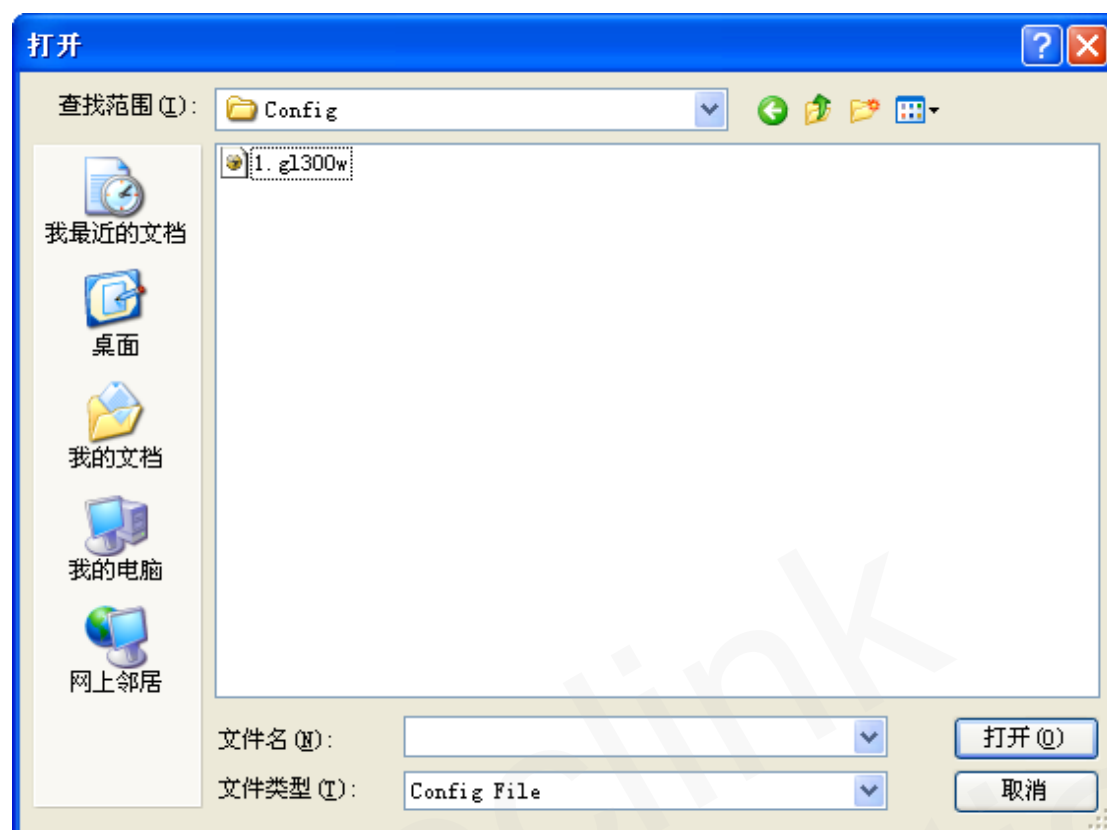


Step_4: Save successfully.



3.4. Load/Send All Configuration

Step_1: Before execute all configurations, please load the configuration file or set all parameters in commands. To load configuration file, please select "Read All Configuration" → "Load Configurations From File". And then select the configuration file you needed.



Step_2: You can set the parameters in commands base on the configuration file, and then click “Send All Configuration” in toolbar.



Step_3: Manage Tool will write all commands to device.